

## Understanding your child's attendance

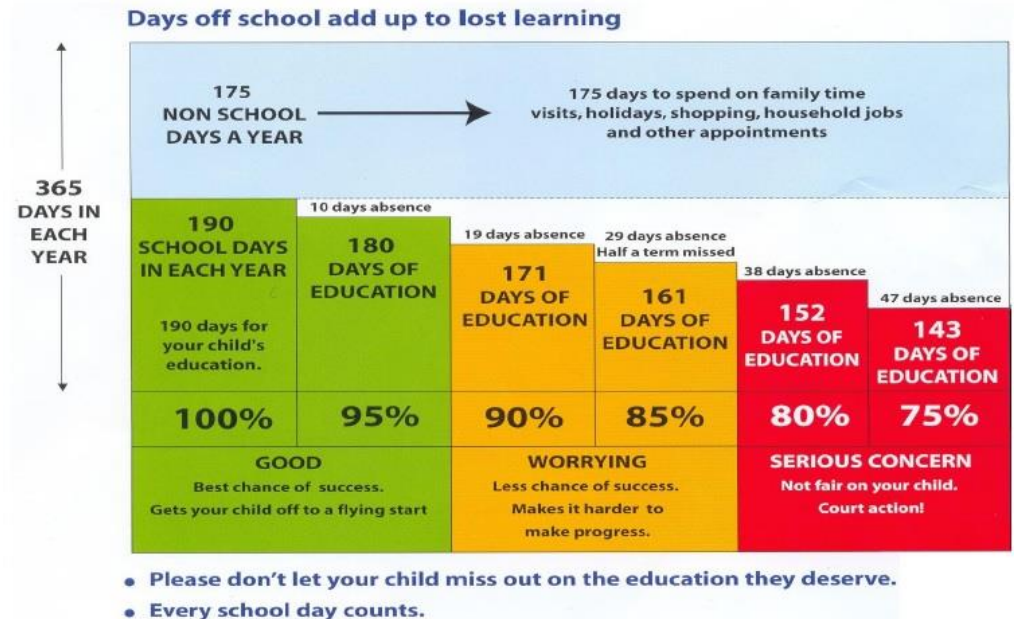
Students and parents receive half-termly updates on attendance. We categorise attendance according to the following colour coding:

<b>98 – 100%</b>	<b>EXCELLENT</b> You will receive a positive praise letter home.
<b>95 – 97.9%</b>	<b>GOOD</b> You will receive a letter of praise & encouragement home.
<b>92 – 94.9%</b>	<b>CAUTION – NEEDS TO IMPROVE</b> Your child's form tutor will talk to them and may contact you to discuss attendance.
<b>90 – 91.9%</b>	<b>WARNING – 90% OR LESS IS PERSISTENTLY ABSENT (PA)</b> Your child will be mentored in school and their Guidance Manager will contact you.
<b>89.9% or below</b>	<b>SERIOUS CONCERN</b> The Education Welfare Officer will contact/visit you and you may face a fine or legal action.

Your child will be encouraged to record their attendance in their planner every half term and to set themselves targets to improve their attendance throughout the year.

You can help by talking to them about their attendance and encouraging them to value every day at school.

Be aware of how much learning time is lost with increasing numbers of days absent:



### Some important facts and figures:

- Students leaving with 5A's (5 at the new grade 7 or above) at GCSE, over a lifetime, will earn £350,000 more than those leaving with 5C's (5 at the new grade 4)
- Research suggests that 17 missed school days a year (92% attendance) = 1 GCSE grade dropped.
- If your child has 19 days or more off school in a year their attendance is below 90% (persistent absence)
- If they have had 9 days or more off school in a year their attendance is below 95%!